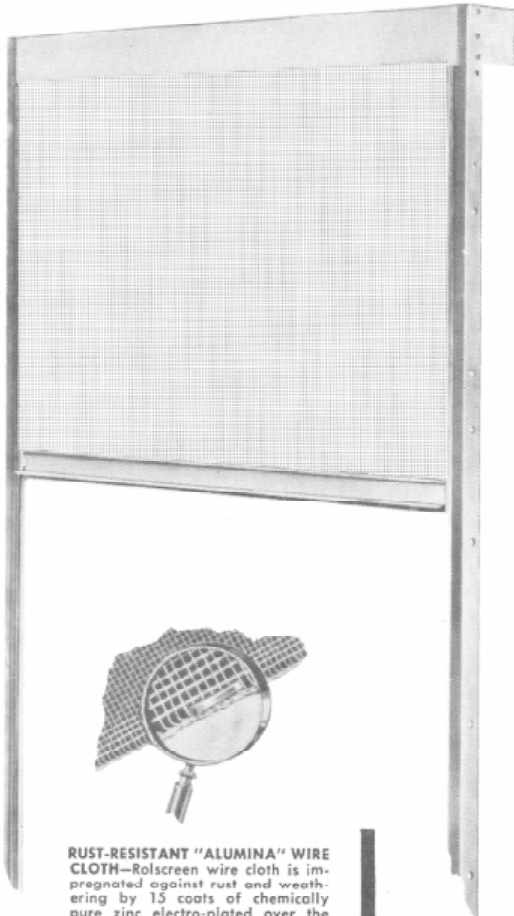




Original Custom Pella® Rolscreen® Window Screen Features



CONSTRUCTION FEATURES

Pella Rolcreens are precision-made to insure years of trouble-free service. Over a million Rolcreens are in use today in homes, hospitals and commercial buildings throughout the country. Only Pella Rolcreens have all these superior construction features.

DELUXE ROLSCREENS

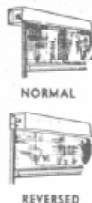
Recommended for large windows and in institutions where screens receive extra hard use. In addition to all of the important features found on Semi-Deluxe Pella Rolcreens, the Deluxe type provides a spring adjuster for roller tension and ball bearing rollers at both ends of the roller assembly.

RUST-RESISTANT "ALUMINA" WIRE CLOTH—Rolscreen wire cloth is impregnated against rust and weathering by 15 coats of chemically pure zinc electro-plated over the entire cloth. A final over-all coating of clear varnish preserves the natural grey of zinc and helps prevent soiling and discoloring. Triple selvage edge at both sides of wire cloth insures maximum tensile strength. Metal lugs ride in guide to keep wire cloth taut.

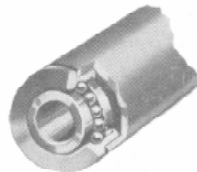


DURABLE—Should the screen receive an accidental blow, the metal lugs release themselves from the guide without injury to the screen. The wire cloth automatically re-enters the guide when the screen is raised and lowered again.

REVERSED ROLSCREENS—In order to clear existing window hardware, Rolcreens can be reversed. That is, instead of the screen wire coming out of the front of the Rolscreen housing, it can be arranged to come out of the back of the housing close to the sash.



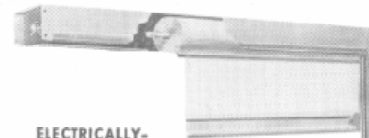
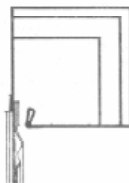
BALL BEARING ROLLER—For smooth operation, ball bearings are provided on both ends of the roller assembly in deluxe Rolcreens. Spring tension can be increased or decreased on deluxe Rolcreens by use of a simple adjusting tool.



FINGER TIP CONTROL—Positive catches are attached to each end of operator bar. When operator bar is pulled down, catches hold it against sill. Just release the catches and Rolcreens roll up through the guides on to the concealed spring roller at the top of the window.



STEEL HOUSING SIZES—Three sizes of steel housings are available to accommodate screen cloth when rolled up. Housing size depends on the window height. For openings under 84" high, the standard 2 3/8" housing is recommended. For openings over 84" high, the special 2 7/8" housing must be used. Openings under 52" may use a special 2 1/8" housing.

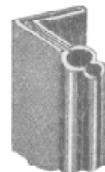


ELECTRICALLY-WELDED HOUSING

A floating roller is contained and totally concealed in this sturdy, inconspicuous steel housing which is only 2 3/8" square for standard window heights. Manufactured from rust-resistant steel, it furnishes a perfect bond for paint to match window trim.

GUIDES HOLD SCREEN TIGHT AT JAMBS

Rolcreens slide up and down in tubular guides which hold the wire cloth tight at jambs. Friction angles hold guides and are screwed to stop or jamb. Cap at top of friction angle supports roller housing. Or, window stops may be cut in two or prepared with a saw kerf to receive the guides with roller housing resting on top of stops.



POSITIVE CLOSURE AT SILL

When Rolcreens are pulled down, the operator bar locks tightly against sill. Operator bars on all Pella Rolcreens are equipped with a resilient, Vinyl-plastic strip across the bottom. This provides extra tight contact between operator bar and sill.

